

OVERVIEW

E-studio Pro offers a Vendor-independent platform that simplifies migration from one Vendor to another. It can be used for translating schematics, libraries and netlists from/to leading vendor databases or from/to standard formats like EDIF 200, EDIF300, OpenAccess (netlist only) and EdaXML, for viewing schematics, generating schematics from netlists. It can also be used for collaboration as it contains red-lining functionality. E-studio comes in 2 modes to satisfy schematic experts and regular engineers.

SCHEMATIC DESIGN TRANSLATION

E-studio Pro supports reading from/writing to major schematic formats. E-studio is translating all your schematic design data schematics, libraries, connectivity, hierarchy, backannotation data, properties/attributes, text, some packaging info. E-studio supports configuration/mapping file with extensive set of commands that helps in customizing the translation for your needs. E-studio can extract schematic CAD data from its native file format and can translate it directly into the new file format taking into account the limitations on the receiving end. E-studio can translate schematic data from native CAD format to/from standard EDA format like EDIF200, EDIF300, EdaXML. By providing TCL script support and batch mode E-studio expedites your translation process.

NETLIST DATA TRANSLATION

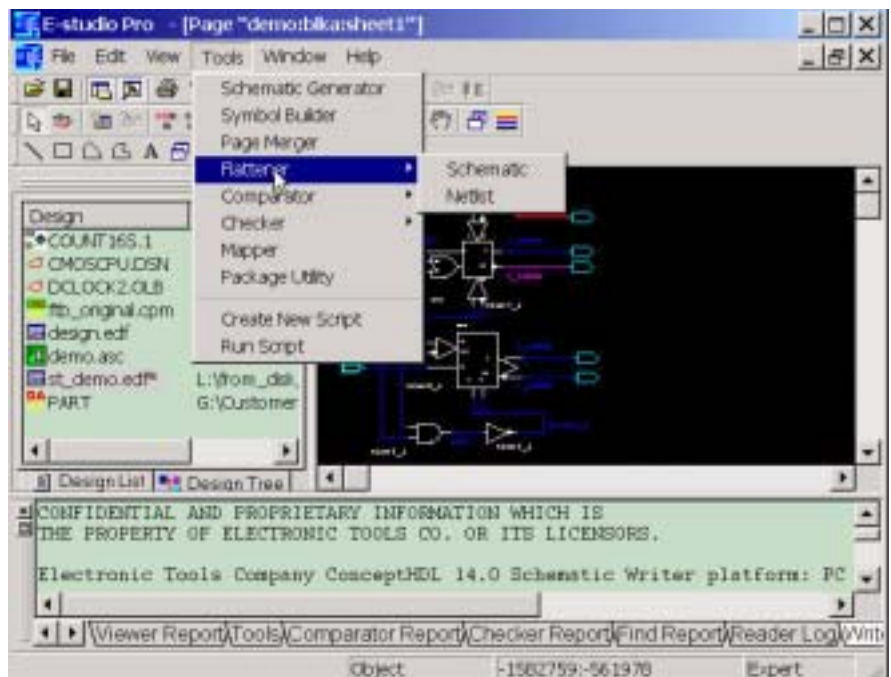
E-studio can extract Netlists from all Schematic formats it support. The extracted Netlist could be saved to standard formats like EDIF200/EDIF300/EdaXML/Verilog/OpenAccess and others. E-studio can also translate the Netlist data between the standard Netlist formats. You can browse Netlist design tree in E-studio and add information to Netlist objects when necessary

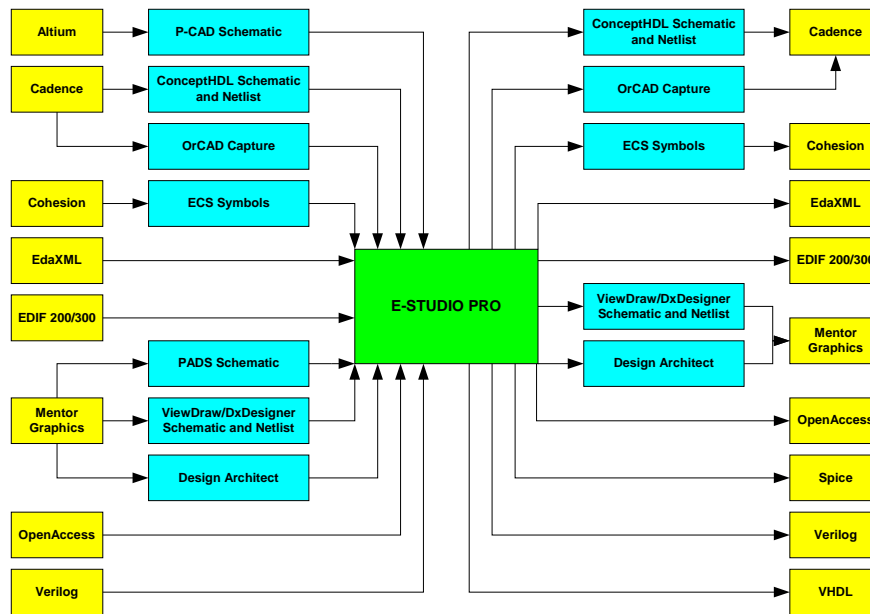
SCHEMATIC DESIGN VIEWING

By supporting multiple CAD formats E-studio provides you a possibility to use it as a Vendor independent (**) Viewer. The design tree Browser and Search engine make finding any object simple. Using E-Studio Viewer you can view your hierarchy, occurrence data or you can view your pages layer by layer.

SCHEMATIC AND NETLIST TOOLS

E-studio's Comparator is a useful tool when you are doing design translations. You can compare netlists of the original design and of the translated one. The comparison configuration helps you to compare design with different level of circumstantiation. Comparator produces a text report about found differences. Schematic Flattener is useful when your system is not supporting hierarchy or by some reason you prefer to deal with a flat design instead of hierarchical one. Schematic Merger is useful to merge multiple pages into one sheet.





EDIF200/EDIF300/ EDAXML ENVIRONMENT

E-studio provides an integrated environment for working with standard EDA formats like EDIF 200, EDIF300, and EdaXML. The environment includes viewing of the Schematic EDIF200/EDIF300//EdaXML files, browsing netlist design tree, reliable syntax and semantic EDIF200/EDIF300//EdaXML checkers, report generator, extensive object search, hierarchy navigation, conversion between standard formats, netlist extraction.

SCHEMATIC GENERATION

E-studio provides Schematic and symbol generation capabilities. Standard netlist formats like EDIF200 / EDIF300 / EdaXML/OpenAccess/Verilog could serve as an input for Schematic generation. The generated Schematic can be translated to the E-studio supported CAD format of your choice. The schematic and symbol generation can be customized to generate graphics according to the selected Vendor style.

E-STUDIO PRO FEATURES

- Direct translation of IC and PCB schematics between major Vendors
- Translation of schematics and netlists to/from standard EDA formats like EDIF200, EDIF300, EdaXML, OpenAccess (netlist only), Verilog, VHDL
- Netlist and schematic comparison
- Schematic and symbol generation
- EDIF 200, EDIF300 and EdaXML environment including Browser, Viewer, Checkers, MarkUps, netlist extraction from schematics, etc
- Netlist and Schematic utilities like flattening, page merging, etc
- TCL scripting support and batch mode
- 2 modes of work - for novices and experienced professionals